

BY LOUIE STOUT

# Electronics For 2010



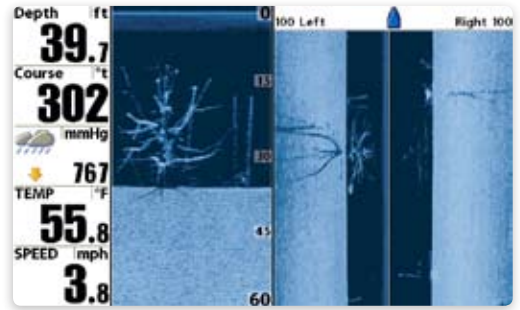
We get you up to speed on the top electronics for the coming year.

## Combo Kayak

Humminbird

The 385ci Combo Kayak fishfinder includes built-in GPS antenna, transducer installation kit, 12-volt battery, charger, cover and more. The unit has the new SwitchFire sonar feature that provides two viewing options — Clear Mode, which displays only fish and structure; and Max Mode for more detail. It is capable of reading and displaying optional Navionics cartography and comes with an SD card for recording viewings or saving waypoints.

» [www.humminbird.com](http://www.humminbird.com); 800-633-1468

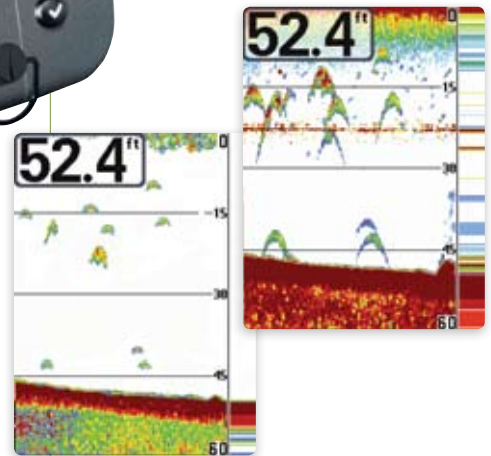


## Down Imaging

Humminbird

Current owners of most Humminbird Side Imaging units can now get a software upgrade that provides Down Imaging, which provides a 3-D view of bottom directly beneath the boat. New models (998c SI and 898c SI) come standard with Down Imaging, while existing models (1197c SI and 798c SI) will feature Down Imaging as well.

» [www.humminbird.com](http://www.humminbird.com);  
800-633-1468



## SwitchFire

Humminbird

Available on all of the company's 300 models, SwitchFire provides two modes for viewing sonar. Max Mode gives anglers great detail of subsurface objects, including plankton, thermoclines and current, in addition to structure and fish. Anglers can even track their lures on the screen. In Clear Mode, only fish and structure are displayed.

» [www.humminbird.com](http://www.humminbird.com);  
800-633-1468



## Mark Series

Lowrance

Two new graphs, designed with entry-level anglers in mind, have 480 x 480 monochrome screens with 16-level gray scale definition. The Mark-5x is a 200 kHz fishfinder while the Mark-5x Pro is a dual frequency 83/200 kHz unit. Both units feature quick-release, tilt-and-swivel brackets and have easy-to-use menus.

» [www.lowrance.com](http://www.lowrance.com);  
800-324-1356



## StructureScan

Lowrance

The 3-D StructureScan sonar imaging module can be added to HDS units to provide left and right underwater viewing and DownScan imaging directly beneath the boat. Anglers can use split screen views to include traditional sonar simultaneously. Anglers can cursor anywhere on the 3-D screen to learn distance and depth of structure.

» [www.lowrance.com](http://www.lowrance.com);  
800-324-1356



## Garmin

GPSMap 536s

The high-resolution, 5-inch VGA color display comes with a dual-frequency transducer and an internal, high-speed antenna for faster mapping capabilities. It comes pre-loaded with a worldwide base map and has a card slot for additional maps. It is also capable of storing up to 3,000 waypoints.

» [www.garmin.com](http://www.garmin.com); 800-800-1020



## E Series Widescreen

Raymarine

Several multifunctional features are available on widescreen units, which range from 9 to 14 inches and offer the convenience of a touch screen or the traditional keypad control. They come pre-loaded with Navionics cartography and use the company's digital sonar with four fishfinder presets.

» [www.raymarine.com](http://www.raymarine.com); 603-881-5200

## i-Pilot

Minn Kota

The trolling motor system add-on integrates GPS technology into the Minn Kota TerraNova, PowerDrive V2, Riptide ST or Riptide SP bow-mounted motors. Among the many features included is Record a Track, which allows anglers to save and later retrace a fishing path; Spot-Lock, which holds the boat in one spot like an anchor; and Cruise Control, which maintains boat speed in 1/10 mph increments.

[www.minnkotamotors.com](http://www.minnkotamotors.com); 800-227-6433

INDEX	
Company .....	Page No.
Cannon.....	34
GPSMap 536s .....	33
Humminbird	
Combo Kayak.....	32
Down Imaging.....	32
SwitchFire .....	32
JL Marine.....	34
Lowrance	
Elite Series.....	34
Mark Series.....	33
StructureScan.....	33
Minn Kota.....	33
MotorGuide.....	34
Raymarine.....	33
Vexilar.....	34





## Ultra Pack

Vexilar

The company celebrates its 50th anniversary with the Limited Edition Ultra Pack FL-20 flasher unit that includes every option the company offers and comes wrapped in a custom soft pack. Options include a Flex-Light, extra rod holder, beverage holder and knit stocking cap.

» [www.vexilar.com](http://www.vexilar.com);  
952-884-5291



## IntelliTroll

Cannon

When attached to a downrigger cable, the IntelliTroll transmits accurate temperature, trolling speed and lure depth on a 4-inch LCD monitor. It has an integrated "wet switch" that activates the unit only when it's in water; and it operates on four AA batteries.

» [www.cannondownriggers.com](http://www.cannondownriggers.com);  
800-227-6433



## Sportsman Power-Pole

JL Marine

Designed for boats 20 feet long and shorter, the Sportsman Power-Pole has the same design and offers the same advantages as the Pro Series model, but the entry-level, moderately priced unit comes in 6- and 8-foot lengths. It is constructed from the same materials but has fewer features. It comes in a silver color and has a three-year warranty.

» [www.power-pole.com](http://www.power-pole.com);  
813-689-9932



## Elite Series

Lowrance

Three value-priced color units, each with 5-inch screens, are available in this series. The Elite-5x is a sonar unit only; the Elite-5 combo is a fishfinder and chartplotter; and the Elite-5m is a chartplotter only. All units have 480 x 480 displays, quick-release tilt and swivel brackets and simplified menus for easy operation.

» [www.lowrance.com](http://www.lowrance.com); 800-324-1356



## VariMax Kayak

MotorGuide

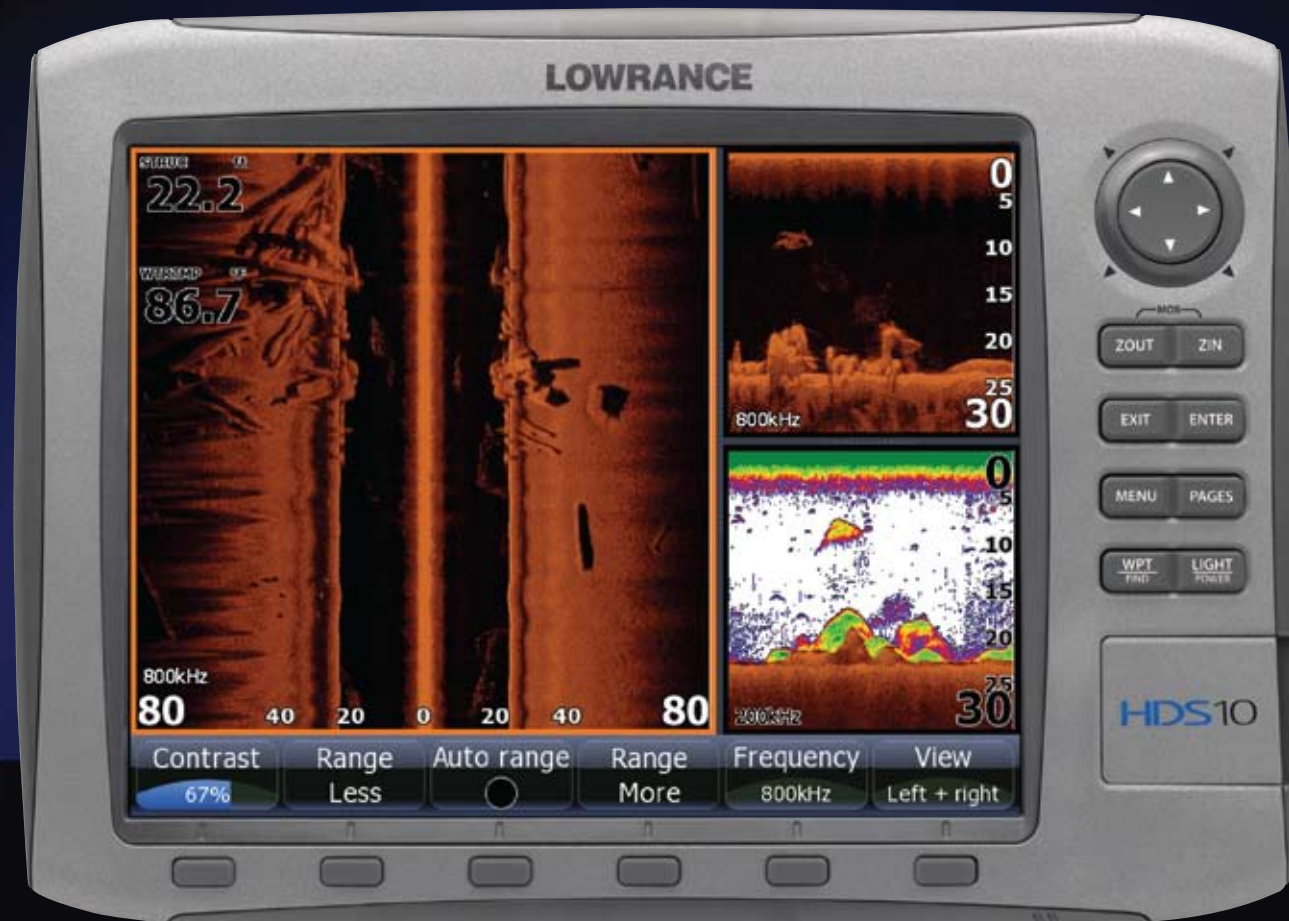
Kayak and small boat anglers now have a trolling motor specifically designed for their crafts: the VariMax Digital Kayak model. It has a 20-inch shaft, variable speed control on the handle and can be mounted on the transom or bow. It is also safe for saltwater use.

» [www.motorguide.com](http://www.motorguide.com);  
920-929-5040

FTR

# SEE FISH & STRUCTURE LIKE NEVER BEFORE

**StructureScan™ Imaging for HDS**  
NOW AVAILABLE!



Your path to greater fishing success is now paved with the newest, most dynamic Lowrance sonar creation. The new StructureScan™ sonar imaging system option for HDS® is now available. It's a plug-in module for all HDS displays for the first true, panoramic, three-crystal sonar imaging view for complete, picture-perfect underwater detail. See left, right and now straight down from your boat with exclusive DownScan Imaging™. Add that to award-winning Broadband Sounder™ sonar built into HDS, and you get the also-exclusive DownScan Overlay™ for a totally new, jaw-dropping view of fish and structure. The revolutionary HDS – now with optional StructureScan™ sonar imaging – together, the most complete fish-finding power tool never before seen.



Get the whole picture at  
[www.lowrance.com/structurescan](http://www.lowrance.com/structurescan)

**LOWRANCE®**

CIRCLE NO. 018 ON READER SERVICE CARD